

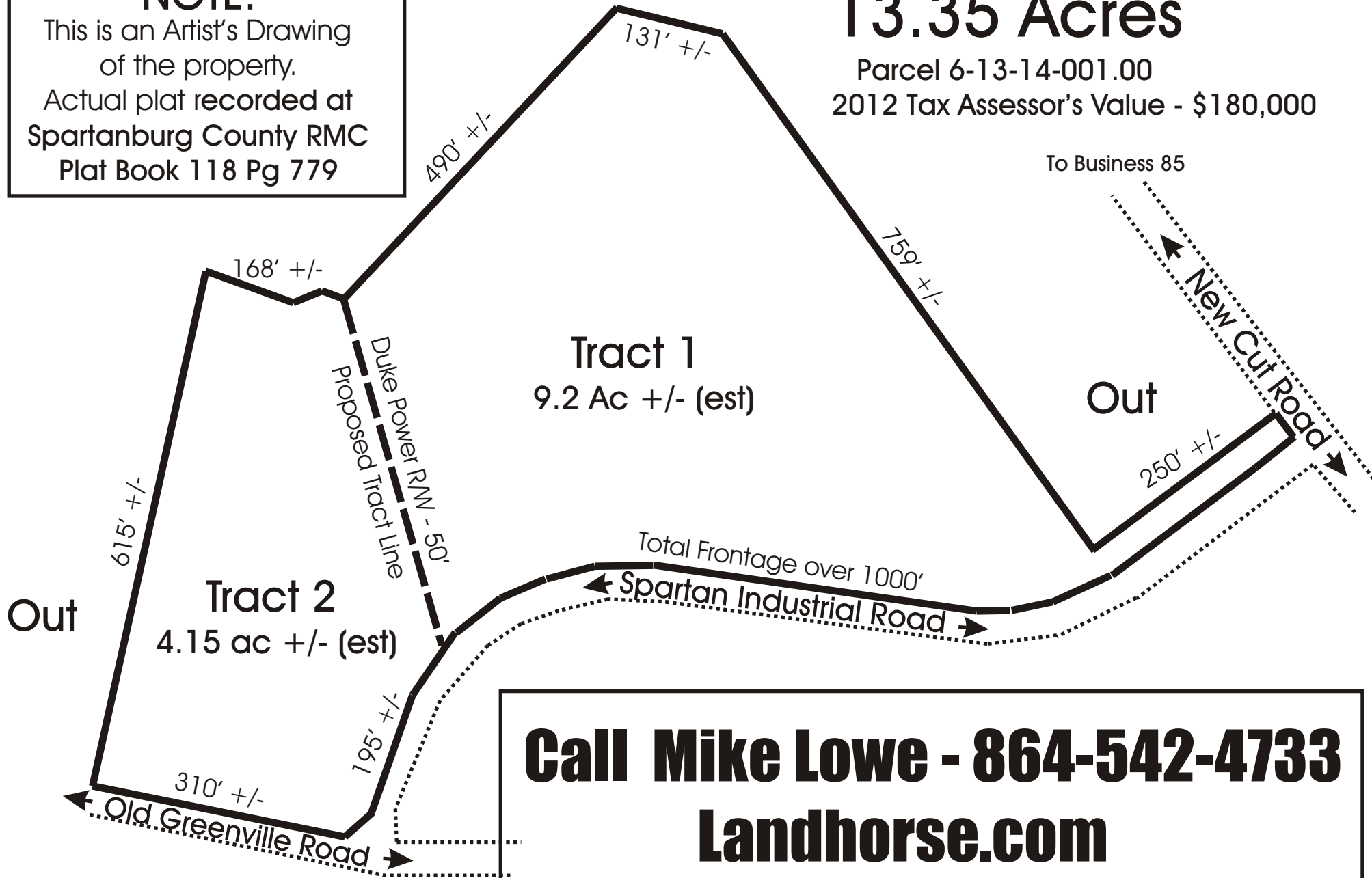
For Sale - Will Divide - Make offer - Will negotiate

NOTE:

This is an Artist's Drawing
of the property.
Actual plat recorded at
Spartanburg County RMC
Plat Book 118 Pg 779

13.35 Acres

Parcel 6-13-14-001.00
2012 Tax Assessor's Value - \$180,000



Call Mike Lowe - 864-542-4733
Landhorse.com