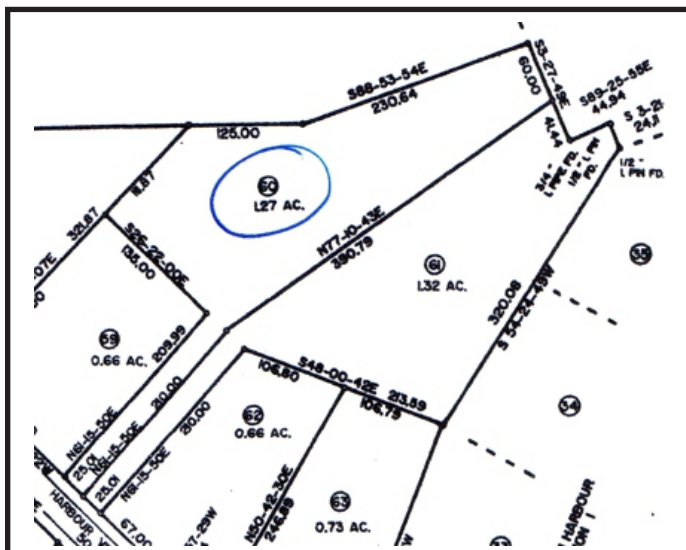


# Prime Building Lot For Sale North Harbour - Lake Blalock

## Upscale Waterfront Subdivision

**North Harbour** - Located on the shores of beautiful Lake Blalock in northern Spartanburg County. The subdivision has reasonable restrictions, beautiful views, great infrastructure and is managed by a common sense Homeowners Association. Amenities include a pool and a clubhouse for parties and events and well maintained common areas. District 2 schools.

**Lot 60 - Phase 2** - This building lot is 1.27 acres located on a quiet interior street in the subdivision. The property sits high above the road and provides an excellent view of Lake Blalock. There are several upscale homes surrounding Lot 60 and public water is available. Building restrictions call for a minimum 1800 square feet of heated floor space. All homes in North Harbour are somewhat larger than the minimum restriction. The Spartanburg County Tax Identification number for this lot is 2-25-00-136.00. A recent survey is available.



**DIRECTIONS : From I-85 at Highway 221  
Take Hwy 221 toward Chesnee - 2.7 miles  
GO LEFT on Foster Grove - take the  
FIRST RIGHT on Sandy Ford to 4-way stop  
GO RIGHT on Casey Creek to 3-way stop  
GO LEFT on Buck Creek for 1/2 mile  
GO LEFT into North Harbour - take the  
FIRST RIGHT - Harbour View Drive  
PROPERTY ON THE RIGHT - RED FLAGS**

The GPS destination address is  
**430 Harbour View Drive, Chesnee, SC**

**Asking Price - \$12,000**

Buyer's note - This lot is owned by the HOA hence the reduced price.  
The Spartanburg County Tax Assessor's value for 2015 is \$35,700

**Mike Lowe - Broker - 864-542-4733**  
**mike@Landhorse.com**